



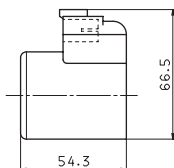
"40W" DC COILS FOR CDL06...

Type of protection (in relation to the connector used)	IP 66
Number of cycles	18.000/h
Supply tolerance	+10% / -10%
Ambient temperature	-54°C ÷ 60°C
Duty cycle	100% ED
Insulation class	H
Weight	0,354 Kg

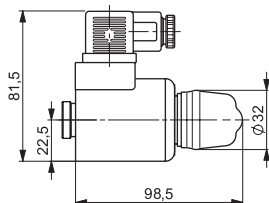
VOLTAGE (V)	MAX. WINDING TEMPERATURE (AMBIENT TEMPERATURE 25°C)	RATED POWER (W)	RESISTANCE AT 20°C (OHM) ±10%
12V	135°C	40	3.6
24V	135°C	40	14.4

IT40W - 02/2004/e

DEUTSCH (CZ) DT04 - 2P



E1 MANUAL EMERGENCY



P1 ROTARY EMERGENCY

